

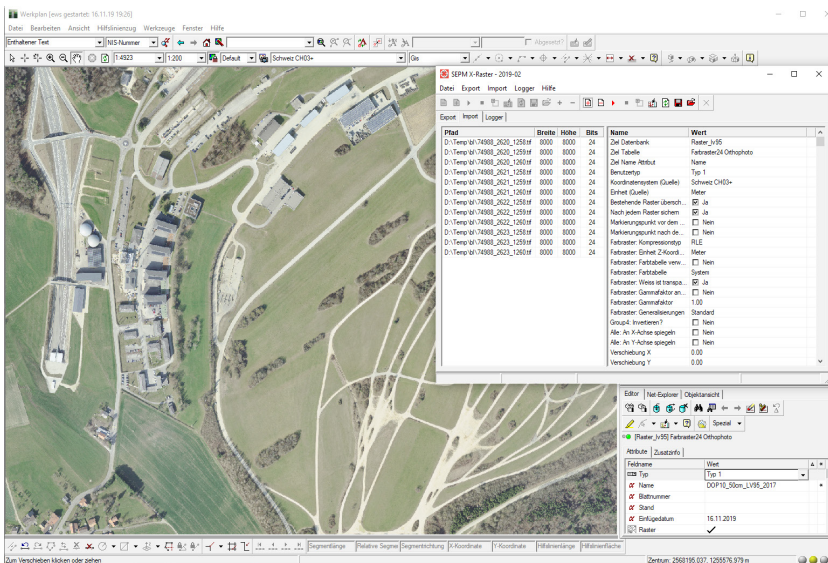
SEPM X-Raster

Import / Export – Made Simple



Raster Import / Export for Smallworld

With SEPM X-Raster, multiple raster files can be imported together into Smallworld in one step. The export function allows the export of Smallworld data as raster tiles in different file formats.



Raster import: Selection of raster files, as well as target collection and target geometry

The advantages raster import gives you

- **Adjustable parameters:**
All the parameters of the underlying Smallworld Raster Import functions can be set.
- **Additional parameters:**
Translations in x/y-direction and mirror operations around the x- or y-axis can be configured in the user interface.
- **Registration information:**
World-File-Files (TFW) are parsed to position the raster data.
- **GeoTIFF:**
The georeferencing information of a GeoTIFF file can be extracted as long as it represents an affine transformation.
- **Preview feature:**
Outlines and file names are displayed as previews.
- **Update feature:**
Existing raster objects can be updated with fresh raster data.

Specifications

Import Formats

- BMP
- TIFF
- PNG

Import Functions

- Adjustable parameters
- Additional parameters
- Registration information
- GeoTIFF
- Preview feature
- Update feature

Export Formats

- JPEG
- PNG
- ECW
- TIFF

Export Functions

- Adjustable Parameters
- Adjustable Margins
- Aggregation of tiles
- Registration information
- Project Information
- Can be used as an engine

Smallworld Versions

- Smallworld 4: 4.0/4.1/4.2/4.3
- Smallworld 5: 5.1.9/5.2.8

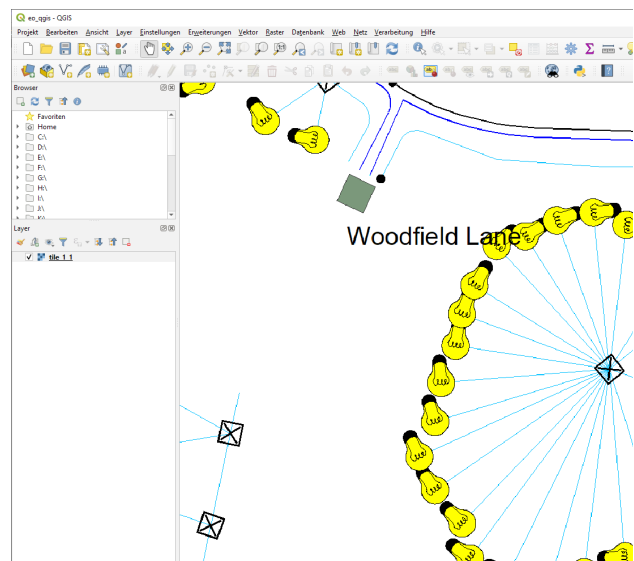
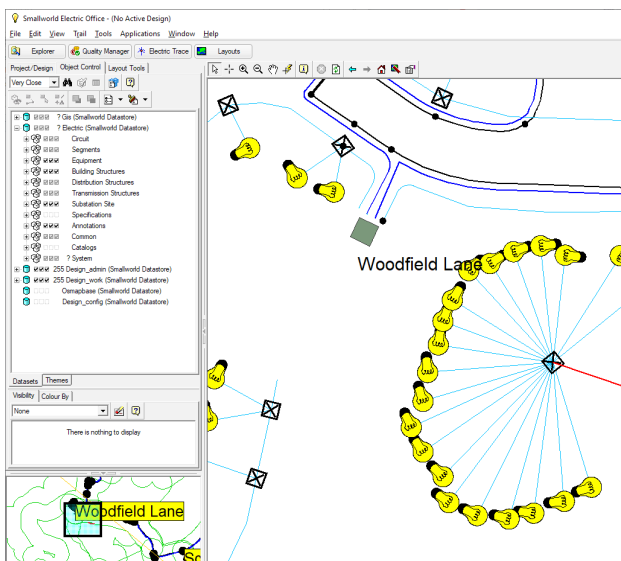
SEPM X-Raster

Import / Export – Made Simple



Raster-Export Applications

The raster export enables data delivery in raster format for data recipients who don't receive vector data. It also allows data to be archived on a specific date. Scanned plans can be stored and georeferenced as raster files after processing in your GIS. SEPM X-Raster is also used as a component in individual information solutions.



Smallworld data (left) and section exported as raster file (right)

The advantages raster export gives you

- **Adjustable parameters:**
Tile and pixel size in x- and y-directions are adjustable.
- **Adjustable Margin:**
To ensure that texts and symbols are also displayed at the edge of the tile, the rendered area can be extended by a margin.
- **Aggregation of tiles:**
Adjacent tiles can be combined into larger raster files.
- **Registration Information:**
A TFW file („World-File“) is created automatically and enables geographical positioning in the target system.
- **Project information:**
If desired, ArcPad and ArcExplorer project files can be created.
- **Use it as an engine:**
SEPM X-Raster can be used as an engine for specific transmission applications, for example for a „download to TIFF“ feature in a web application.

Name	Wert
Name	Raster Tiles
Dateiname	tile_
Aktiv	<input checked="" type="checkbox"/> Yes
Einheit (Ziel)	Metre
Oben links X	600000.000 m
Oben links Y	200000.000 m
Ausdehnung X	1000.000 m
Ausdehnung Y	1000.000 m
Rand X	100.000 m
Rand Y	100.000 m
Verschiebung X	0.000 m
Verschiebung Y	0.000 m
Anzahl Pixel X	3000
Anzahl Pixel Y	3000
Anzahl Kacheln X	2
Anzahl Kacheln Y	2
Anzahl Kacheln in X-Richtung	1
Anzahl Kacheln in Y-Richtung	1
Verzeichnis	C:\temp\rasters
ACE Kontext	Electricity
Ansichtsmassstab	Country
Sichtbarkeit	
Massstab von (minscale)	0
Massstab bis (maxscale)	100000000
Format	ECW
ECW Komprimierungsfaktor	20
ECW Format	RGB
Sichtbar in ArcPad	<input checked="" type="checkbox"/> Yes

SEPM X-Raster User interface

Software Engineering & Project Management
Gerliswilstrasse 42
CH-6020 Emmenbrücke
Schweiz

Tel. +41 79 632 28 20
www.sepm.ch
info@sepm.ch