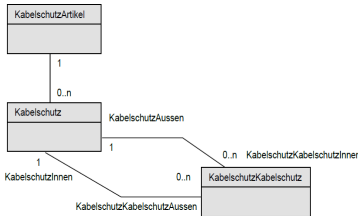


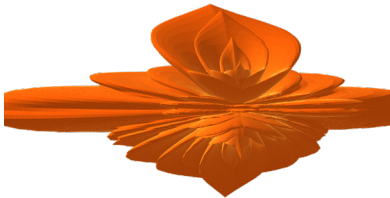
SEPM Services

Innovative solutions for your GIS



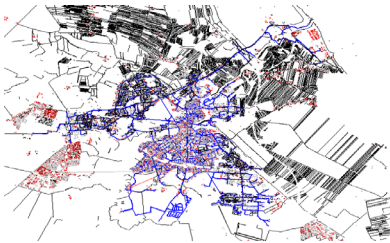
Data modeling

Development of the Swiss GIS model „Datenmodell Elektrizität“ in INTERLIS.



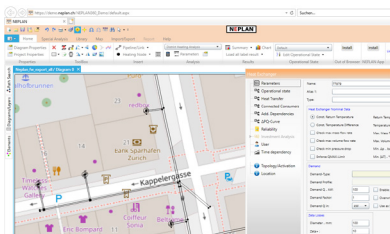
Radio antenna 3D

Calculation of the areas subject to constant radiation in V/m.



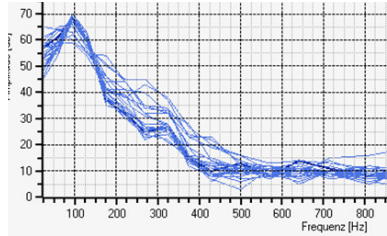
GIS Migration

Import of the legacy system data into a Smallworld database.



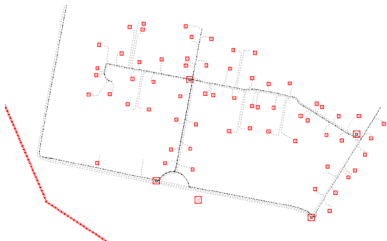
District heating for NEPLAN

Export of district heating data to NEPLAN V10.



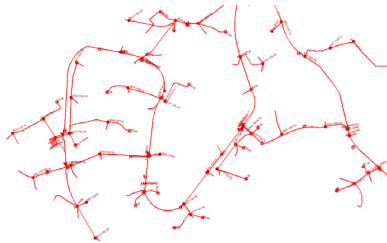
Leak detection

Module implementation for leak detection in water networks.



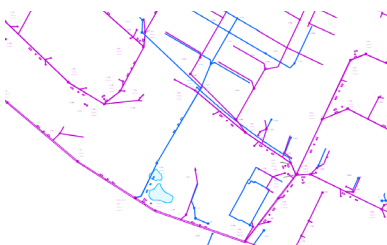
GIS Telecom-Model

Creation of a Smallworld database for the planning of fibre optic networks.



Configuration SIA405 exports

Adaptation of the SIA405 interface for multiple cantonal requirements.



Wastewater INTERLIS export

Export from the FS Kanal to the AG64 model of the canton of Aargau, Switzerland.

Range of services

GIS Projects

- > Project management
- > Analysis/Inventory of existing data models and data
- > Analysis of existing and future business processes
- > Software specification
- > Software design
- > Software development
- > Consulting on the use of GIS technology

Methodology

The development of high-quality software is characterized by an intelligent combination of methods, architectures and programming languages.

SEPM is based and relies on the interaction of established models in the areas of specification, design and implementation. It also has integrated within, a range of agile methods to implement any iterative requirements.

Software solutions from SEPM are designed to meet your current requirements and to seamlessly fit into your current systems while at the same time being readily equipped for your future.

Contact SEPM to talk about the concrete realization of your next software project.