

SEPM ISYBAU Interface

Import / Export – Made Simple



Import / Export to ISYBAU

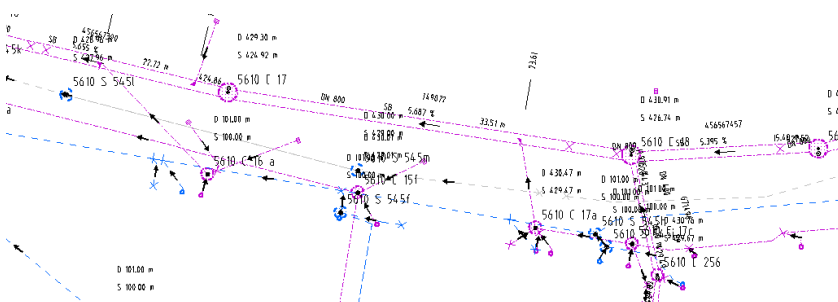
The SEPM ISYBAU interface enables a complete import of ISYBAU XML data into Smallworld. On the other hand NRM Wastewater data can be exported into ISYBAU XML data models..



Transfer file

SEPM ISYBAU Interface

Smallworld GIS



Example: ISYBAU data imported to Smallworld

The Advantages of the SEPM ISYBAU Interface

- > **Import of ISYBAU-XML into NRM Kanal:**
Import of inventory and measurement data into NRM Kanal. The different import modes give flexibility in being able to only check or either partially or completely update existing data. Optionally, you may import only the primary network (sewage main/chamber/facility), the secondary network (connecting lines) or only measurement data (line and chamber statuses).
- > **Export from NRM Kanal to ISYBAU-XML:**
Export of inventory and measurement data from the NRM Kanal application into an ISYBAU XML file. The User Interface allows capturing meta-information on the property, administration, identification and work order.
- > **SEPM X-Database ISYBAU:**
A complete import of any ISYBAU XML data into the SEPM X-Database ISYBAU. The data model of the Smallworld database was generated directly from the XML schema files of the ISYBAU format and can therefore also include data from other ISYBAU areas such as operating data or hydraulic data.

Specifications

Supported ISYBAU models

- > XML 2013-02
- > XML 2017-07

NRM Kanal Versions

- > NRM Kanal 4.3.*
- > NRM Kanal 5.2.*

ISYBAU Object classes

- > Inventory data
 - Schacht
 - Bauwerk
 - Pumpwerk
 - Becken
 - Behandlungsanlage
 - Klaeranlage
 - Auslaufbauwerk
 - Mulde/Teich
 - Rohr/Rigole
 - Anschlusspunkt
 - Haltung
 - Leitung
- > Measurement data
 - Auftrag
 - Rohrleitung/RZustand
 - Knoten/KZustand

NRM Kanal Object classes

- > Inventory data
 - AW Schacht
 - AW Fiktiver Schacht
 - AW Bauwerk
 - AW Haltung/Druckrohrltg.
 - AW Anschlussleitung
 - AW Hausanschluss
 - AW Regeneinlauf
 - AW Stutzen
- > Measurement data
 - AW Kanaluntersuchung
 - AW Schaden
 - AW Schacht Untersuchung
 - AW Schacht Schaden