

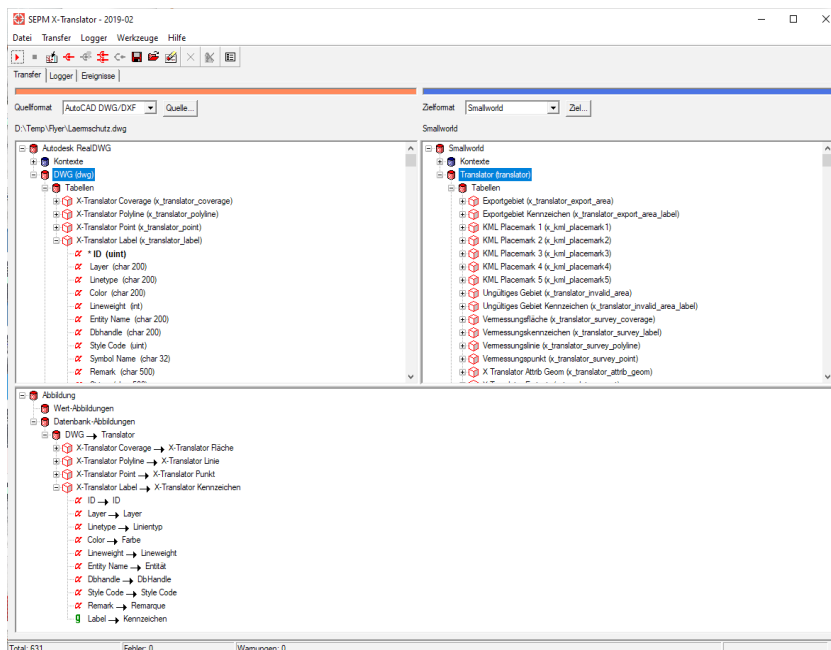
SEPM X-Translator

Import / Export – Made Simple



Your interface for Smallworld

The SEPM X-Translator allows the import and export of vector data to and from Smallworld. Exchange GIS data with architects, engineering offices, planners, analysts, authorities, partners, graphic designers and customers.



SEPM X- Translator user interface

Your Benefits

- **User-friendly:**
The user interface is structured and easy to use. .
- **High quality DWG import and export:**
Blocks, hatches, fonts, line patterns, line thickness, colors, etc. are all supported.
- **DXF/DWG import without the need for configuration:**
The Translator database included in the product enables a configuration-free import of DXF/DWG data.
- **Application of preconfigured export profiles:**
The SEPM „Simple GUI“ user interface enables smooth, efficient data export. Preconfigured definitions can be selected and applied with a few clicks.
- **Use it as an Engine:**
The SEPM X-Translator can be integrated as an engine for specific data transfer applications, for example a „download-to-DXF“ feature in a web application.

Specifications

Formats (Bundle)

- DXF / DWG
- MapInfo MIF/MID
- ESRI Shape
- GeoJSON
- PostGIS
- KML (Google Earth)
- Text (ASCII CSV)
- Oracle Spatial
- SVG

Additional Formats

- INTERLIS
- NEPLAN
- ISYBAU
- XPlanung
- ...

Features

- Clean clipping of geometries at the edge of the export area
- Support of styles and drawing methods
- Default values for enumerators, catalogues and parent objects
- Setting of DXF properties per object class, geometry and style
- Import and export of database relations
- Updating data with „Connect-ID“
- Evaluation of queries during export
- Authorization function
- DXF/ DWG Import without the need for configuration

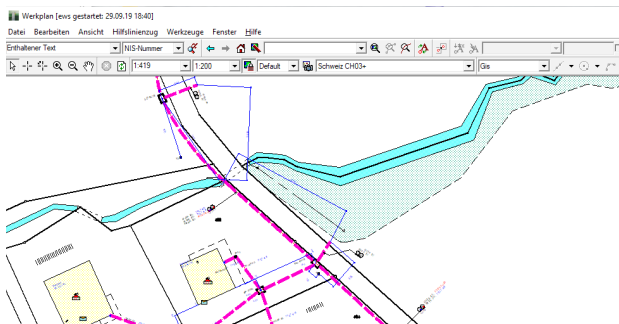
SEPM X-Translator

Import / Export – Made Simple

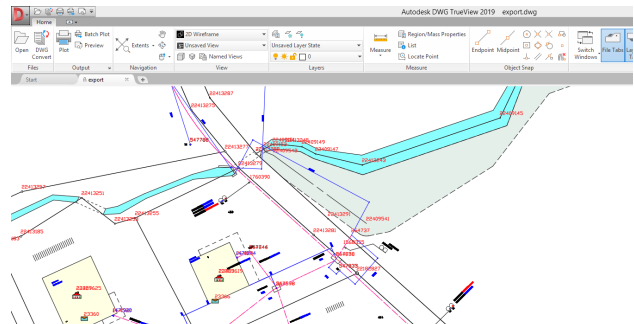


Excellent support of styles and drawing methods

Smallworld drawing methods (e.g. display of cross-sections) are applied during export. The exported data therefore contains all relevant style information. Thus, the effective appearance of the exported data almost corresponds to the original view. For example, data viewed in AutoCAD looks almost identical to its original in Smallworld.



Original representation in Smallworld



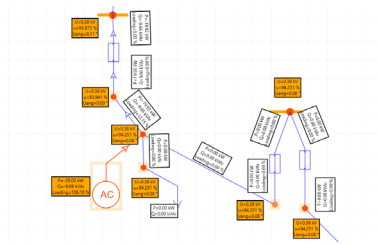
Display of data exported to DWG in AutoCAD

Potential Application Use Cases



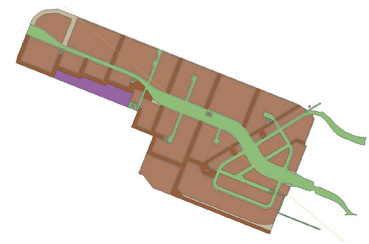
Planning in CAD systems

Export to DWG for planning of construction or retrofitting projects in CAD systems.



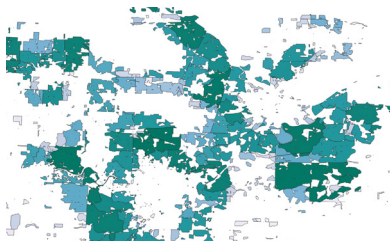
Analysis & Network Calculation

Analysis and network calculations based on exported GIS data e.g. in NEPLAN.



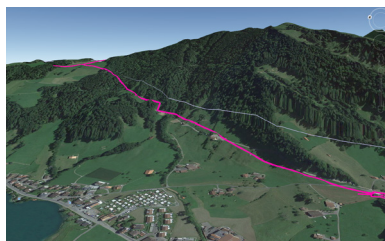
Planning & Coordination

Import / export of XPlanung data to Smallworld as part of planning processes.



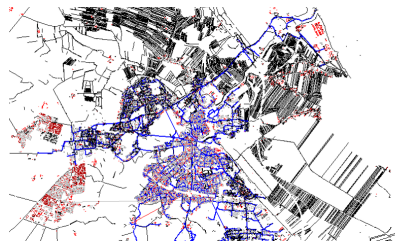
Data exchange

Import and export of data from authorities and partners, such as water protection zones.



Presentation

Display of Smallworld data e.g. in Google Earth for visualization purposes.



GIS Migration

Data transfer from the existing geographical information system to the new one

Software Engineering & Project Management
Gerliswilstrasse 42
CH-6020 Emmenbrücke
Schweiz

Tel. +41 79 632 28 20
Fax +41 41 260 57 20
www.sepm.ch
info@sepm.ch